

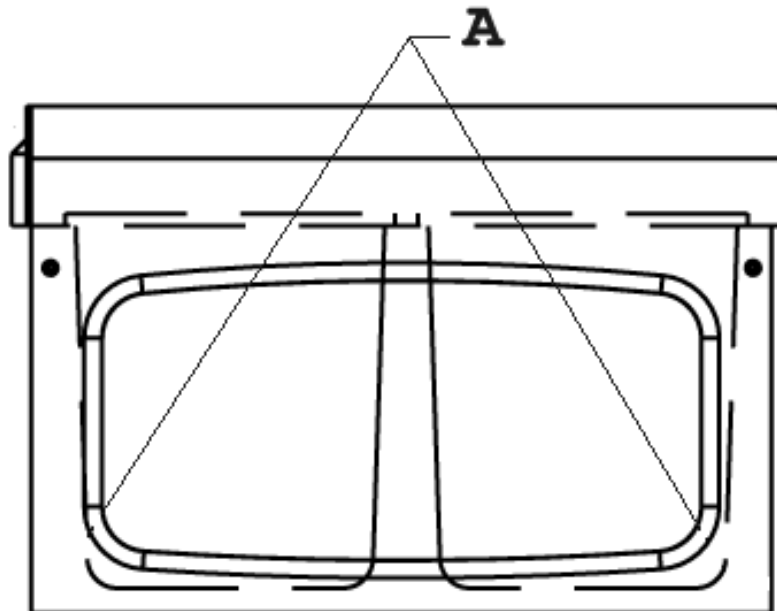
KIMBERLEY

Kimberley Products Pty Ltd
5 Abbots Road, Dandenong South, Vic 3175
Ph: (03) 9768 -5777 Fax: (03) 9768 -5788
www.kimprod.com.au

Making quality products in Australia

KRB08 TWIN BIN WASTE SEPARATION SYSTEM INSTALLATION INSTRUCTIONS

- 1) Position bin either on the bottom of the cupboard or on a shelf allowing 5mm clearance between cupboard door and front of twin bin
- 2) Be sure to allow sufficient clearance for door hinges when bin is extended
- 3) Secure in cupboard using four round head screws. As indicated (A) screw into slots on the inside of base at front and back of unit.



*If required, we suggest that you use "Medium Kitchen Tidy Bags" with your purchase.
To insert bags correctly, lift bins and tuck excess bag down around the sides and
drop bins back into base*